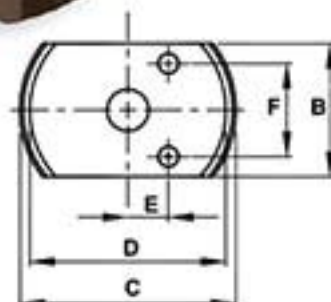


Flat Body Cylinder Kits

- Magnetic adapters in various heights.
- Carrying case.
- Adapters: Ideal if you do need additional height in restricted areas.



HF0503

Model Number	Cylinder Model	Capacity kN	Stroke (mm)	Oil Capacity (cc)	Min. Height (mm)	Adapter	Adapter Dimensions (mm)						Weight (kg)	
							A	B	C	D	E	F		G
CYLINDER CAPACITY: 5 TON = 49 kN														
HF0503B	HF0503	49	6	4	32	I	6	41	65	59	12	28	6	2.6
						II	13							
						III	25							
						IV	32							
CYLINDER CAPACITY: 10 TON = 104 kN														
HF1005B	HF1005	104	11	16	43	I	10	56	90	82	21	37	7	3.9
						II	20				N/A	N/A	N/A	
						III	40				N/A	N/A	N/A	
CYLINDER CAPACITY: 20 TON = 194 kN														
HF2005B	HF2005	194	11	31	51	I	10	76	108	100	27	49	10	7.0
						II	20				N/A	N/A	N/A	
						III	40				N/A	N/A	N/A	
CYLINDER CAPACITY: 30 TON = 287 kN														
HF3005B	HF3005	287	13	54	59	I	10	95	121	113	34	52	10	9.4
						II	20				N/A	N/A	N/A	
						III	40				N/A	N/A	N/A	
CYLINDER CAPACITY: 50 TON = 445 kN														
HF5006B	HF5006	445	16	101	67	I	10	114	149.5	141.5	41	66.5	11	14.66
						II	20				N/A	N/A	N/A	
						III	40				N/A	N/A	N/A	

Accessories

Fitting



Hose



Gauge



Hand Pump

