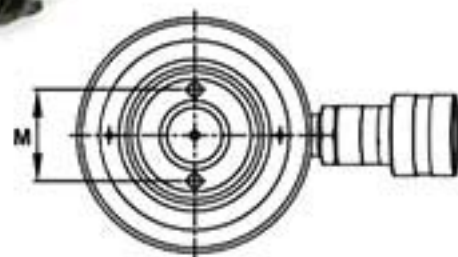
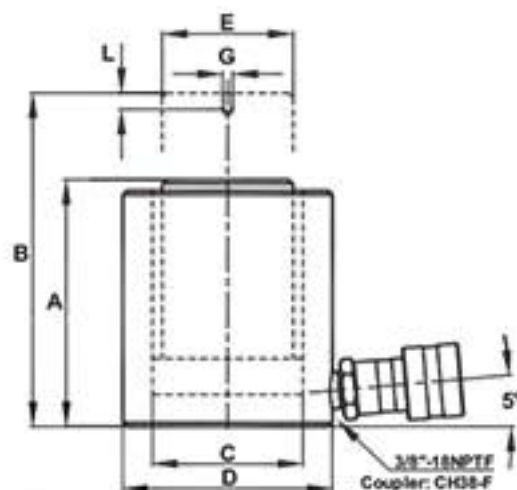
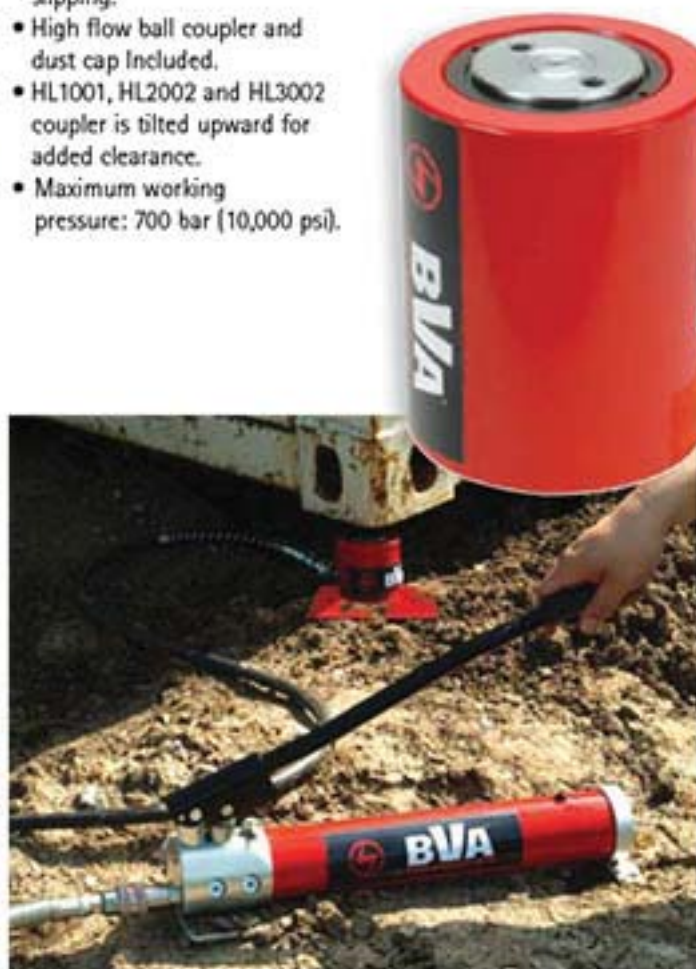


## Low Profile Cylinders

- Compact design for use in confined spaces.
- Plunger wiper reduces contamination and extends the cylinder-life.
- Specially designed return spring ensures a quick retraction and extends the life of the spring.
- Industrial hard chrome plated ram helps to prevent scratching and corrosion.
- Plunger end is grooved to reduce load slipping.
- High flow ball coupler and dust cap Included.
- HL1001, HL2002 and HL3002 coupler is tilted upward for added clearance.
- Maximum working pressure: 700 bar (10,000 psi).



Model Number	Stroke (mm)	A	B	Oil Capacity (cc)	Weight (Kg)
		Min. Height (mm)	Max. Height (mm)		
<b>CYLINDER CAPACITY: 10 Ton = 106 kN</b>					
HL1001	38.0	88	126	58	2.6
<b>CYLINDER CAPACITY: 20 Ton = 198 kN</b>					
HL2002	44.5	99	144	126	5.0
<b>CYLINDER CAPACITY: 30 Ton = 293 kN</b>					
HL3002	62.0	117	179	259	6.8
<b>CYLINDER CAPACITY: 45 Ton = 445 kN</b>					
HL5002	60.0	122	182	381	9.9
<b>CYLINDER CAPACITY: 90 Ton = 887 kN</b>					
HL10002	57.0	141	198	722	20.6

Model Number	Capacity kN	Cylinder Effective Area (cm <sup>2</sup> )	C	D	E	G	L	M
			Cylinder Bore Ø (mm)	Outside Ø (mm)	Plunger Ø (mm)	Thread	Thread Depth (mm)	Pitch Ø (mm)
HL1001	106	15.2	44	70	38	M4	8	26
HL2002	198	28.3	60	92	51	M5	8	40
HL3002	293	41.8	73	102	63	M5	8	40
HL5002	445	63.6	90	124	70	M5	8	40
HL10002	887	126.7	127	165	90	M8	10	56